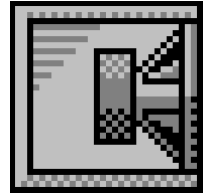


Custom Vented Box Design

By Chad Gray



Box Properties

--Description--

Name:

Type: Vented Box

Shape: Prism, square

--Box Parameters--

Vb = 0.272 cu.ft

V(total) = 0.287 cu.ft

Fb = 48.58 Hz

QL = 7

F3 = 54.36 Hz

Fill = minimal

--Vents--

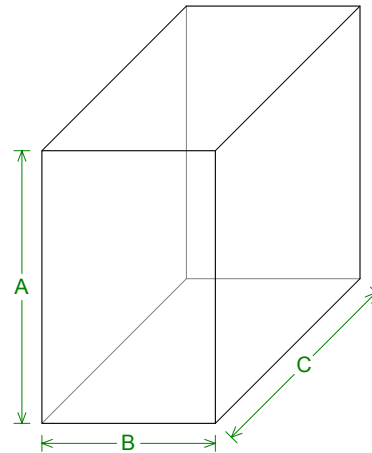
No. of Vents = 1

Vent shape = round

Vent ends = one flush

Dv = 1.525 in

Lv = 6.449 in



--External Dimensions--

A = 11 in

B = 7 in

C = 11 in

--Internal Dimensions--

A = 9.5 in

B = 5.5 in

C = 9.5 in

--Wall Thickness--

Front = 0.75 in

Side = 0.75 in

Driver Properties

--Description--

Name: W14RC25-08-AVERAGE

Type: Standard one-way driver

Company: Silver Flute

--Configuration--

No. of Drivers = 1

--Mechanical Parameters--

Fs = 47.86 Hz

Qms = 3.898

Vas = 11.77 liters

Xmax = 3.5 mm

P-Dia = 10.5 cm

Sd = 86.59 sq.cm

--Electrical Parameters--

Qes = 0.534

Re = 3.5 ohms

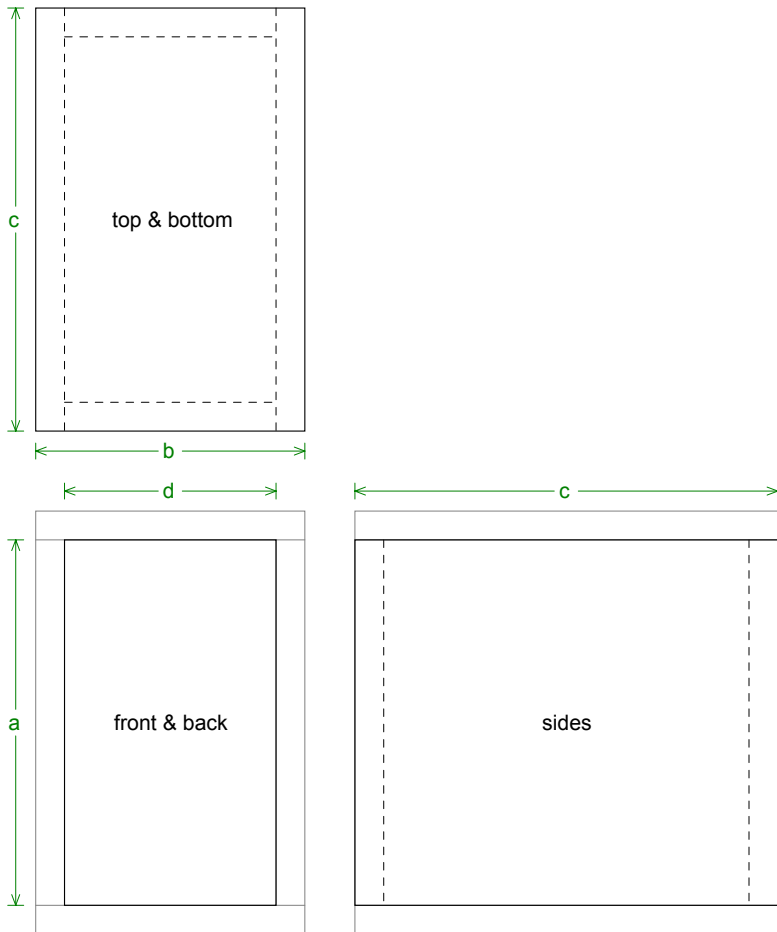
Z = 8 ohms

Pe = 60 watts

--Electromech. Parameters--

Qts = 0.47

2.83-V SPL = 84.37 dB



Box Parts

Box Shape: Square Prism

1 Top, 1 Bottom: depth (c) = 11 in
width (b) = 7, thickness = 0.75 in

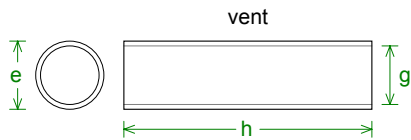
1 Front, 1 Back: height (a) = 9.5 in
width (d) = 5.5, thickness = 0.75 in

2 Sides: height (a) = 9.5 in
depth (c) = 11, thickness = 0.75 in

--Driver Mounting--
Mounting: Flush

--Vent Parts--

1 Duct: outside diameter (e) = 1.775 in
inside diameter (g) = 1.525 in
length (h) = 6.449 in



fractions

1/16	1/8	3/16	1/4	5/16	3/8	7/16	1/2	9/16	5/8	11/16	3/4	13/16	7/8	15/16
0.0625	0.1250	0.1875	0.2500	0.3125	0.3750	0.4375	0.5000	0.5625	0.6250	0.6875	0.7500	0.8125	0.8750	0.9375

decimal equivalents

