

Box Properties

--Description--

Name:

Type: Vented Box

Shape: Prism, square

--Box Parameters--

Vb = 0.46 cu.ft

V(total) = 0.483 cu.ft

Fb = 53.49 Hz

QL = 7

F3 = 64.8 Hz

Fill = minimal

--Vents--

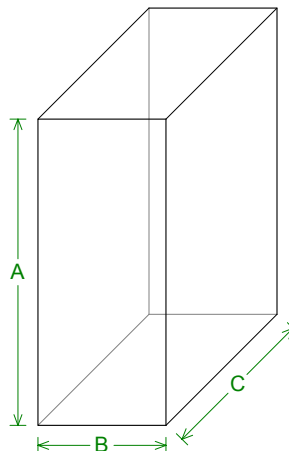
No. of Vents = 1

Vent shape = round

Vent ends = one flush

Dv = 2 in

Lv = 4.694 in



--External Dimensions--

A = 16.75 in

B = 7 in

C = 11.45 in

--Internal Dimensions--

A = 15.25 in

B = 5.5 in

C = 9.952 in

--Wall Thickness--

Front = 0.75 in

Side = 0.75 in

Driver Properties

--Description--

Name: W14RC25-04-AVERAGE

Type: Standard one-way driver

Company: Silver Flute

--Configuration--

No. of Drivers = 2

Mounting = Standard

Wiring = Series

Drivers sum coherently = Yes

--Mechanical Parameters--

Fs = 52.52 Hz

Qms = 3.698

Vas = 10.63 liters [21.25]

Xmax = 3.5 mm

P-Dia = 10.5 cm [14.85]

Sd = 86.59 sq.cm [173.2]

--Electrical Parameters--

Qes = 0.412

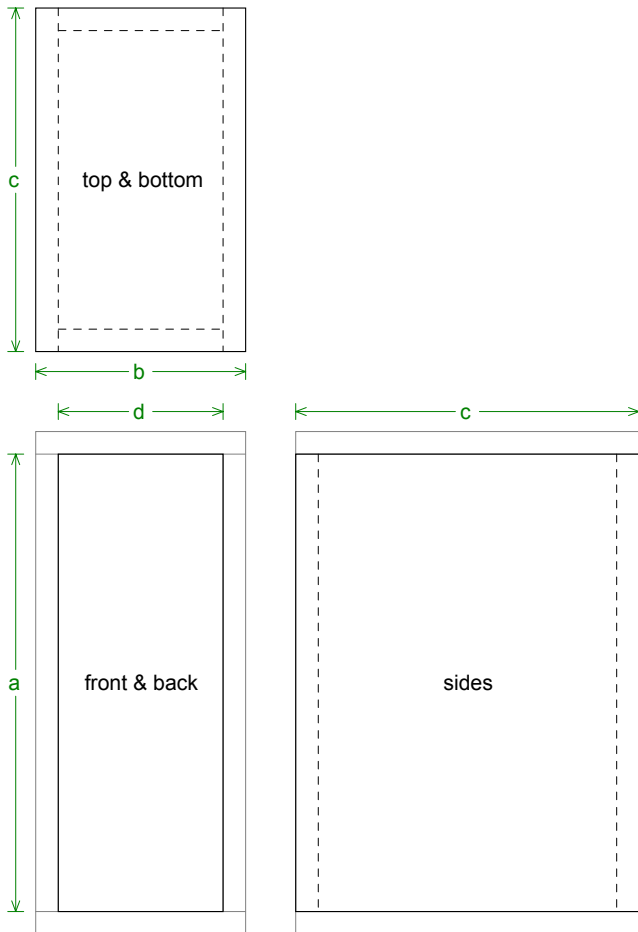
Re = 3.5 ohms [7]

Pe = 60 watts [120]

--Electromech. Parameters--

Qts = 0.37

2.83-V SPL = 86.21 dB [86.21]



Box Parts

Box Shape: Square Prism

1 Top, 1 Bottom: depth (c) = 11.45 in
width (b) = 7, thickness = 0.75 in

1 Front, 1 Back: height (a) = 15.25 in
width (d) = 5.5, thickness = 0.75 in

2 Sides: height (a) = 15.25 in
depth (c) = 11.45, thickness = 0.75 in

--Driver Mounting--

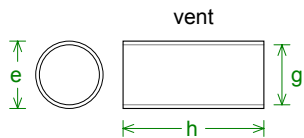
Mounting: Flush

Aim: All drivers face same direction

--Vent Parts--

1 Duct: outside diameter (e) = 2.25 in
inside diameter (g) = 2 in

length (h) = 4.694 in



fractions

1/16	1/8	3/16	1/4	5/16	3/8	7/16	1/2	9/16	5/8	11/16	3/4	13/16	7/8	15/16
0.0625	0.1250	0.1875	0.2500	0.3125	0.3750	0.4375	0.5000	0.5625	0.6250	0.6875	0.7500	0.8125	0.8750	0.9375

decimal equivalents



Wiring Diagram

